

CONTI[®]

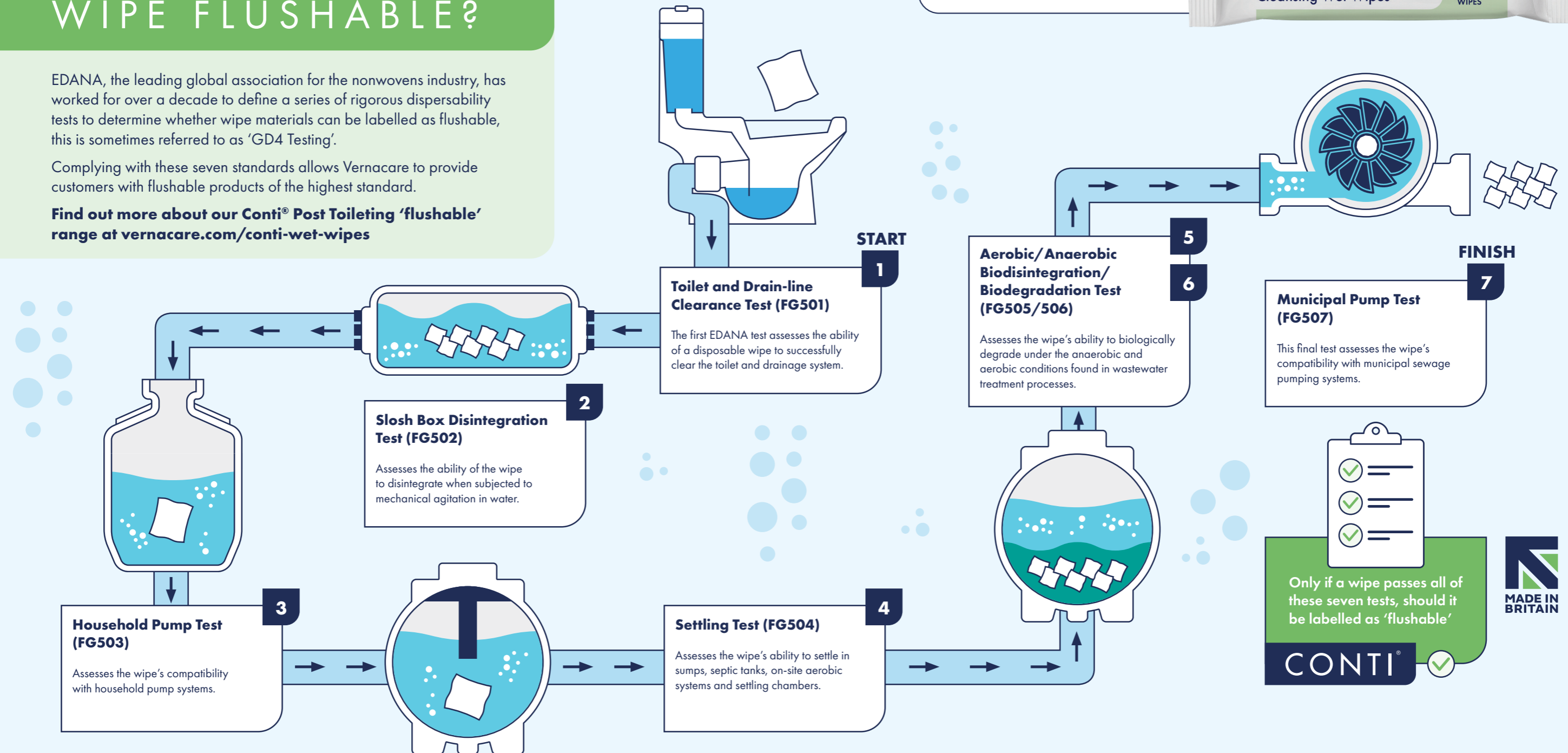
WHAT MAKES A WIPE FLUSHABLE?

EDANA, the leading global association for the nonwovens industry, has worked for over a decade to define a series of rigorous dispersability tests to determine whether wipe materials can be labelled as flushable, this is sometimes referred to as 'GD4 Testing'.

Complying with these seven standards allows Vernacare to provide customers with flushable products of the highest standard.

Find out more about our Conti[®] Post Toileting 'flushable' range at vernacare.com/conti-wet-wipes

Always check the pack
All Conti[®] Wet Wipes are clearly labelled with the appropriate disposal guidance.



EBOS Code	Description
10007666	Conti Cleansing Wet Wipes, Pack of 12 x 50 - Pack of 50, Wipe Size: 22 x 17 cm), Fragrance Free
10021703	Conti Cleansing Wet Wipes, Pack of 27 x 24 - Pack of 24, (Wipe Size: 22 x 17 cm), Fragrance Free

Vernacare

EBOS
HEALTHCARE